

HYDRAULIC HIGH PRESSURE PUMP

Unbelievable water power in a small package!

**SAVE TIME!
SAVE SPACE!
SAVE MONEY!
SAVE WATER!
ADD VALUE!**



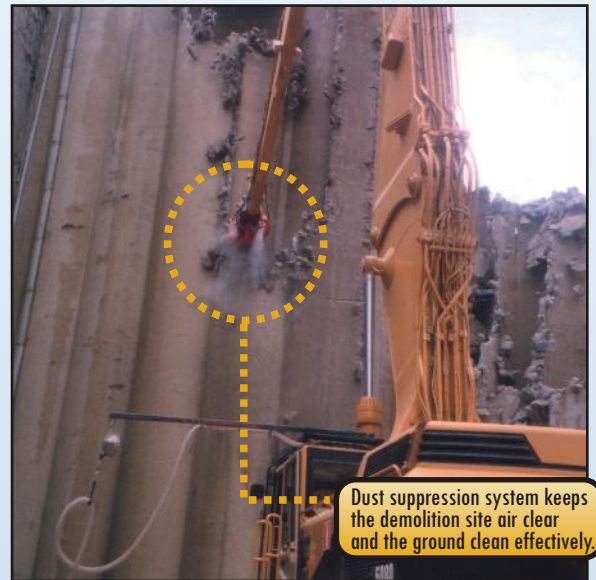
Real estate maintenance:
high pressure washing



Machinery washing
at the work site



Street washing units for various
vehicles - great washing power
with small amount of water.



Dust suppression system keeps
the demolition site air clear
and the ground clean effectively.

HYDRAULIC WATER POWER

The hydraulic high pressure pump transforms the hydraulic power of a work machine into high pressure fluid flow - anywhere, anytime.

GREAT DURABILITY

Patented design allows total freedom of rotating parts.

UNBELIEVABLY COMPACT

In size and weight, the hydraulic pressure pump is only a fraction of traditional pumps of equal power.

LOW WATER CONSUMPTION

Due to high pressure, less water is needed for massive water power.

USAGE COSTS AT MINIMUM

Small size, low weight, durable design and low water consumption make the pressure pump very economic in use.

SUITABLE FOR ANY MACHINE

Due to its incredibly small size, a high pressure pump can be installed on practically any vehicle.

MULTIPLE APPLICATIONS

The pump can be used for effective everyday cleaning tasks, but it is applicable as an alternative for industrial and other applications.

EASE-OF-USE

The pump is simple to operate and and requires no separate fuel.

WIDE MODEL RANGE

Pumps come in all sizes and meet the needs of even the most demanding professional use.



HYDRAULIC HIGH PRESSURE PUMPS

Hydraulic high pressure water pump (HPW) transforms hydraulic power into pumping fluid flow and pressure very effectively.

The patented pump construction is based on hydraulic piston-to-water piston principle. This allows very compact size and complete freedom of rotating parts, granting great durability - without sacrificing any of its unbelievable power, high enough to even cut concrete and metal.

Pumped water (or other fluid) can be taken from a natural source, reservoir or pressurised supply.

Applications

Core applications for high-pressure pumps are various kinds of mobile high pressure washing, for example washing real estate surroundings, machinery cleaning at the work site, etc.

Other professional applications and extensions available are:

- Street washing unit
- Hydro scaling
- Injector pump
- Submersible pump
- Drilling fluid pump
- Sandblasting injector
- High-pressure water heater
- Dust suppression
- Pipe cleaning unit
- Truck tyre washing system
- Fire extinguishing
- Hydraulic Rock Bolt Expansion Unit



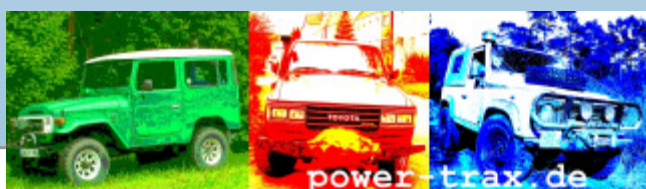
High pressure fire extinguishing



Accessories

There are numerous high-quality accessories for high-pressure pumps: different types of nozzles, brushes, water tanks, spray guns, suction filters, vapour generators, water pressure regulators etc. With these accessories and complete application kits, high pressure water can be used in numerous useful ways, make work quicker and easier with less manpower.

HIGH PRESSURE WATER PUMP MODEL	HYDRAULIC REQ.		PRESSURE RATIO Water/Hydraulic	WATER POWER			DIMENSIONS length/width/height mm	WEIGHT kg
	Flow l/min	Max press. bar		Flow l/min	Pressure bar	Power kW		
HPW 200/30-45	45	210	1,18	30	200	10	243 x 160 x 190	8
HPW 420/20-50	50	220	2,12	20	420	14	250 x 150 x 200	16
HPW 220/50-70	70	210	1,26	50	220	18	325 x 221 x 210	25
HPW 520/30-85	85	210	2,62	30	520	26	285 x 175 x 210	22
HPW 90/150-85	85	210	0,52	150	90	22,5	360 x 235 x 270	30
HPW 180/90-115	115	210	1,12	90	180	27	325 x 266 x 180	28
HPW 460/50-115	115	250	2,03	50	460	39	325 x 250 x 230	26
HPW 130/180-140	140	250	0,68	180	130	39	410 x 259 x 173,5	35
HPW 800/30-140	140	210	4,00	30	800	40	315 x 200 x 205	58
HPW 300/300-350	300	350	1,06	300	300	150	715 x 266 x 355	170
HPW 1600/15-130	130	230	7,87	15	1600	40	394 x 193 x 194	40



Power-Trax.de
Sonderfahrzeugbau

<http://www.power-trax.de>
info @ power-trax.de
tel.: +49 - (0)2947 / 973 858 17
fax: +49 - (0)2947 / 973 858 18

Hauptstrasse 81
DE-59609 Anröchte