



world
class
winches

Hydraulic Planetary Gear Winches

H70PS

Pneumatic freespool clutch Type No 63.31-015

7 TONNES WINCH FOR SIDE MOUNTING



Pulling force

- bottom rope layer	7.0 tonnes	15 700 Lbs
- top rope layer	4.5 tonnes	10 100 Lbs

Rope speed

- bottom rope layer	8.0 m/min	26 ft/min
- top rope layer	12.0 m/min	39 ft/min

Rope speed in high auto 2-speed

- bottom rope layer	n/a	n/a
- top rope layer	n/a	n/a

Max oil pressure

140 bar 2000 psi

Max oil flow

60 l/min 16 gal/min

Drum diameter

224 mm 8.82 inch

Rope diameter

14 mm 0.55 inch

(Acc. to DIN 14584, MBL \geq 138 kN)

Rope length

60 m 197 ft

Numbers of layers

5 5

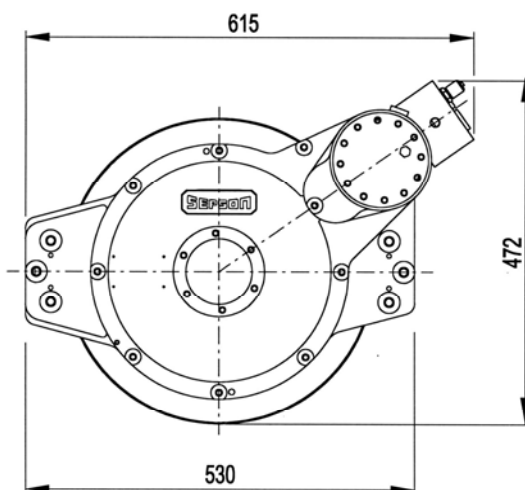
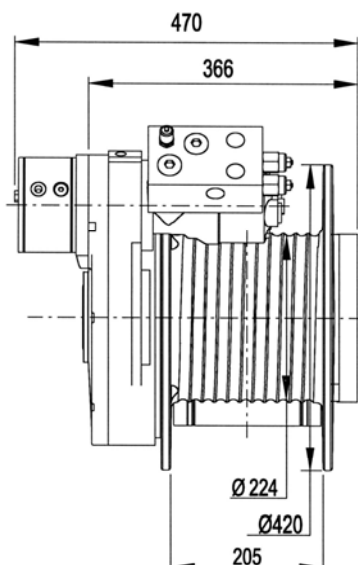
Winch weight

210 kg 472 Lbs

Rope weight

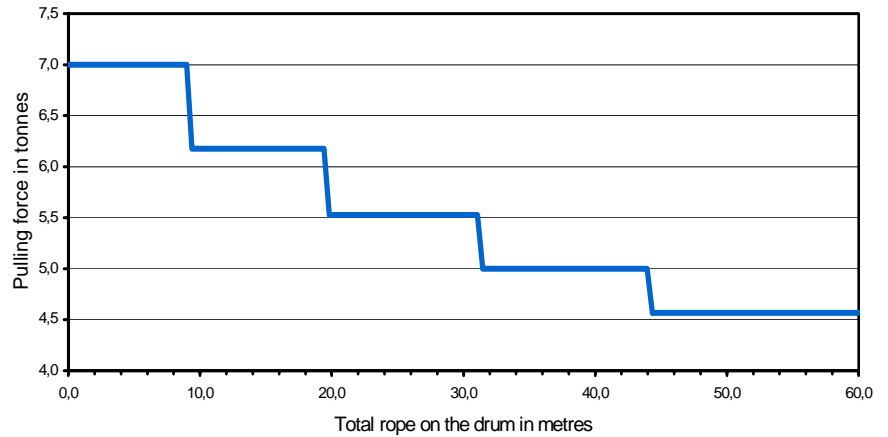
52 kg 115 Lbs

Dimensional drawing (dimensions in mm)



Pulling force over the rope length

	Pulling force (tonnes)	Rope speed (m/min)	Total Rope on the drum (m)
1st	7,0	8,0	9,2
2nd	6,2	9,0	19,6
3rd	5,5	10,0	31,3
4th	5,0	11,0	44,1
5th	4,5	12,0	58,2

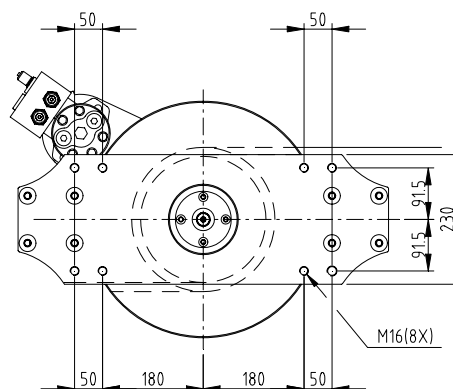


Mounting instructions

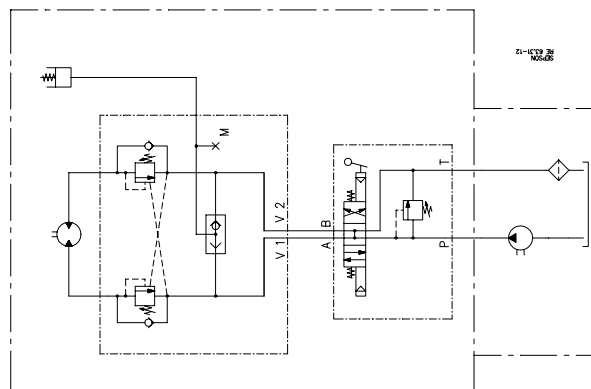
It is always best to seek advice on mounting the winch from both SEPSON and the vehicle manufacturer as early as possible before delivery of the winch.

The winch must be fitted with 8 bolts M16 (hot galvanized) minimum quality 8.8.

Tightening torque 210 Nm (21 kpm) when oiled.



Hydraulic installation



Declaration of Conformity

According to the Machine Directive 98/37/EC, Annex IIA

Sepson AB, P.O. Box 172, SE-780 50 Vansbro, Sweden declare under our sole responsibility that:

The winch type 63.31 with serial numbers 1010-1962

- are manufactured according to the Machine Directive 98/37/EC
- are manufactured according to following harmonized standards – EN 292-1 and 2

Vansbro December 9, 2005. **Sepson AB** Ulf Jons Designer